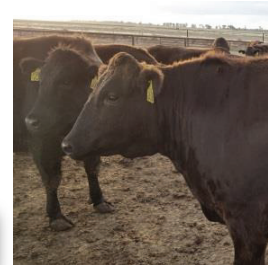


RIVERINA

WAGYU PASTURE FINISHER PELLETS



PRODUCT DESCRIPTION

RIVERINA WAGYU PASTURE FINISHER PELLETS are a palatable, protein and energy supplement with added vitamins and minerals for finishing Wagyu cattle on pasture.

TYPICAL COMPOSITION

- Barley, maize, wheat, sorghum, millrun, cottonseed meal, canola meal, molasses, buffers, ZinMet®, vegetable oil, di-calcium phosphate, ammonium sulphate, limestone, urea, mycotoxin binder, mould inhibitor, Rumensin®, Flaveco™, salt and Riverina ruminant vitamin & mineral premix.
- Base raw materials may gradually change seasonally.

DIRECTIONS FOR USE

- **THIS IS NOT A COMPLETE FEED.** It is designed to be fed with a roughage source such as pasture, hay or silage.
- For best results use an adjustable "lick" self-feeder and regularly monitor intakes.
- Feed at 0.50 – 1.50% body weight from 380kg liveweight depending on pasture conditions and desired weight gains.
- Since cattle are fed for long periods of time it is critical that abundant pasture is available at all times. This ensures a sound functioning rumen and reduces digestive upsets.
- Cattle should have access to fresh, cool, clean water at all times.
- Contact your local Riverina representative for more advice on finishing Wagyu cattle on pasture.

NUTRITIONAL ANALYSIS

			As Fed	Dry Matter
DRY MATTER	%	:	89.00	100.00
PROTEIN	%	MIN:	14.00	15.70
EQUIV. CP	%	MAX:	0.32	0.36
UREA	%	:	Nil	Nil
CALCIUM	%	MIN:	0.80	0.90
PHOSPHORUS	%	MIN:	0.40	0.45
SULPHUR	%	:	0.26	0.29
SALT	%	:	0.25	0.28
VITAMIN A	iu/kg	:	3,350.00	3,764.00
VITAMIN D3	iu/kg	:	400.00	449.00
VITAMIN E	mg/kg	:	75.00	84.00
IRON	mg/kg	:	75.00	84.00
IODINE	mg/kg	:	0.75	0.84
COBALT	mg/kg	:	0.75	0.84

NUTRITIONAL ANALYSIS (continued)

COPPER	mg/kg	:	18.00	20.20
MANGANESE	mg/kg	:	60.00	67.40
SELENIUM	mg/kg	:	0.30	0.34
ZINC	mg/kg	:	110.00	124.00

FEATURES

- WAGYU PASTURE FINISHER PELLETS uses quality proteins from canola and cottonseed meals to help ensure finishing cattle grow evenly.
- Palatable formula to help maintain consistent feed intakes.
- Organic zinc (ZinMet®) helps improve hoof integrity.
- Added vitamin E to help support immune development.

QUALITY PRODUCT

- Manufactured to strict quality control standards for incoming raw materials and the finished product.
- Formulated in accordance with current research into beef cattle nutrition.

MEDICATION

This feed contains Rumensin® which supplies monensin sodium at 25.0mg/kg for improved feed conversion efficiency and Flaveco™ which supplies flavophospholipol at 10mg/kg for stimulating growth rate and increasing feed efficiency.

WITHHOLDING PERIOD

Nil.

WARNING

Should be gradually introduced to allow for proper rumen adaption.

Do not feed to dogs, horses or other equines as it may prove fatal.

Feed only to beef cattle.

Do not feed to sheep or lambs.

STORAGE

[Cool, shaded, dry conditions away from vermin.](#)

BEST BEFORE

[Six months from the date of manufacture.](#)

PACK SIZE

20kg woven polypropylene bags.

Bulk: Please contact your Riverina sales representative.



Rumensin® is a registered trademark of Eli Lilly and Company.
Flaveco™ is a registered trademark of International Animal Health P/L.
ZinMet® is a registered trademark of Global Animal Products Inc.

This feed is scientifically formulated for the intended species of animal and should not be fed to any other animal. It may contain medication and ingredients that may prove harmful if fed to other species.

Ver 7.3

Issue Date: March 2024

